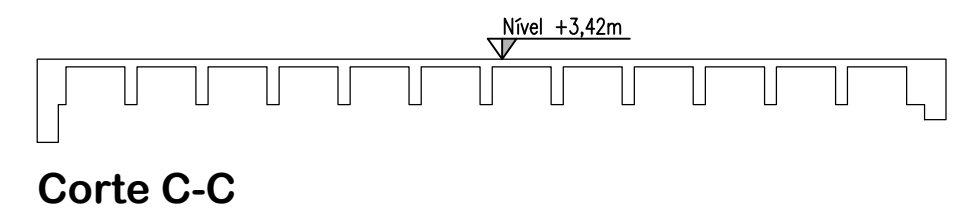
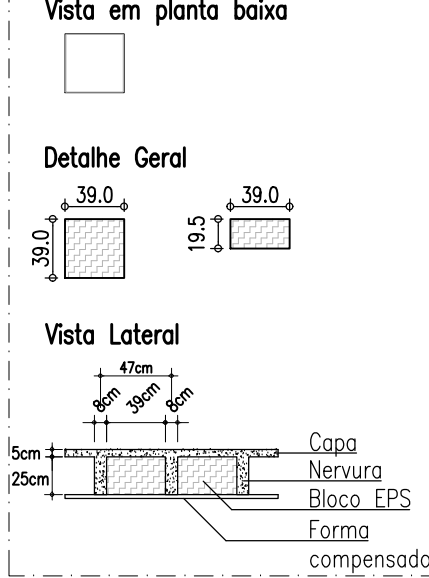


Resumo de materiais

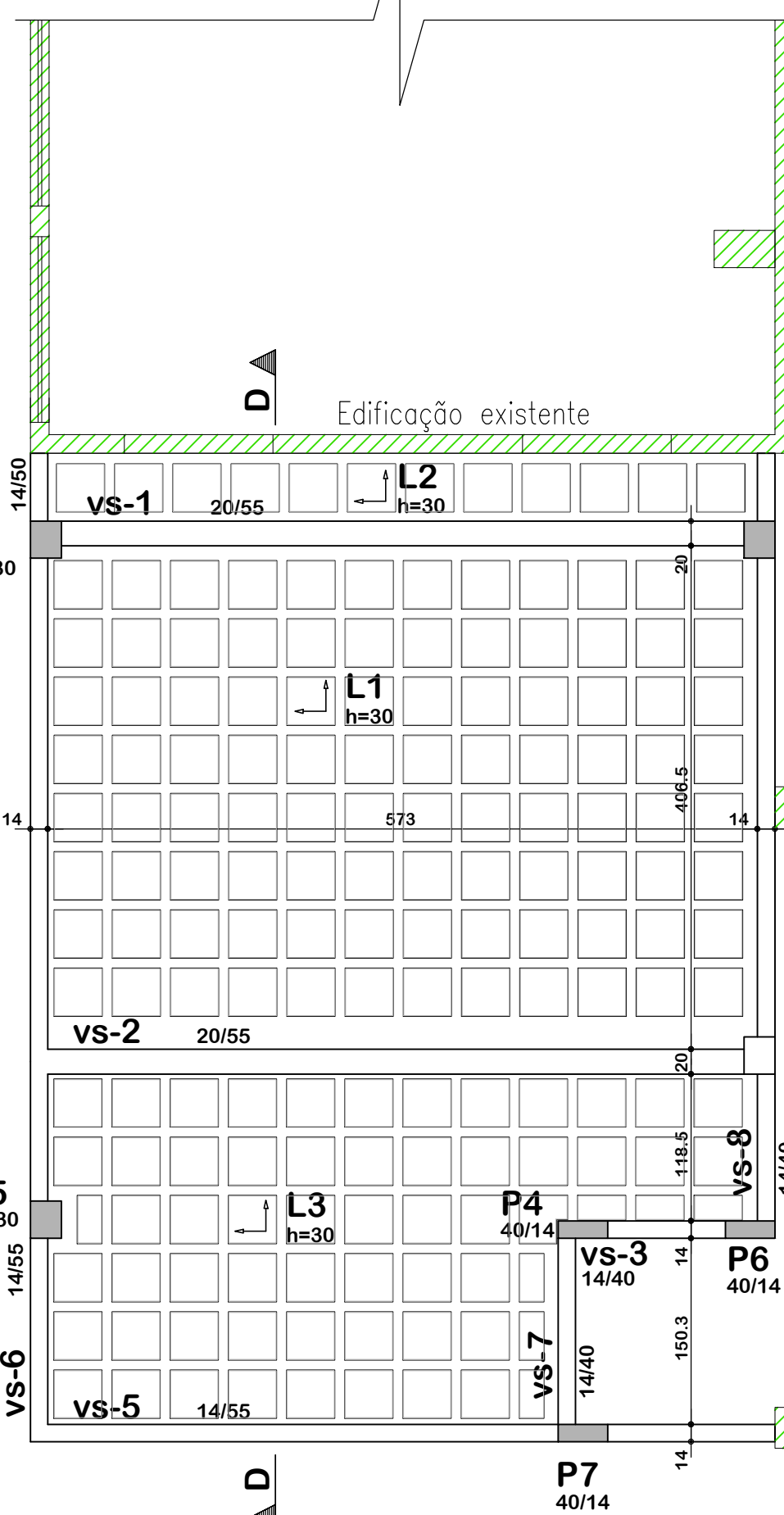
SUPERIOR		
Elementos	Volume (m3)	Formas (m2)
Vigas	2,95	23,00
Pilares - (Ver obs.)	1,36	22,00
Laje	5,76	40,00
Total	10,07	85,00

Observação: O volume quantificado de concreto dos pilares é do topo das vigas inferiores até o fundo das vigas deste pavimento

DETALHE: Cubetas de EPS



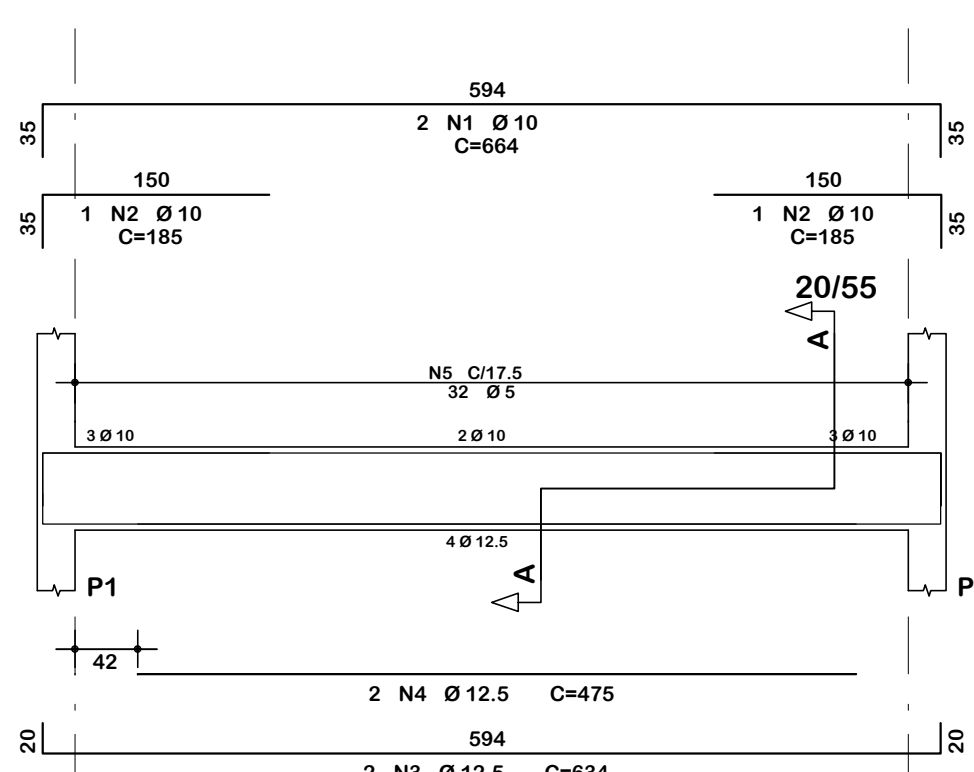
Corte C-C



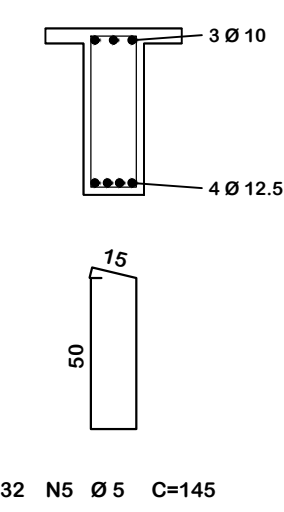
Corte E-E

Planta de formas: Superior
Escala: 1:50

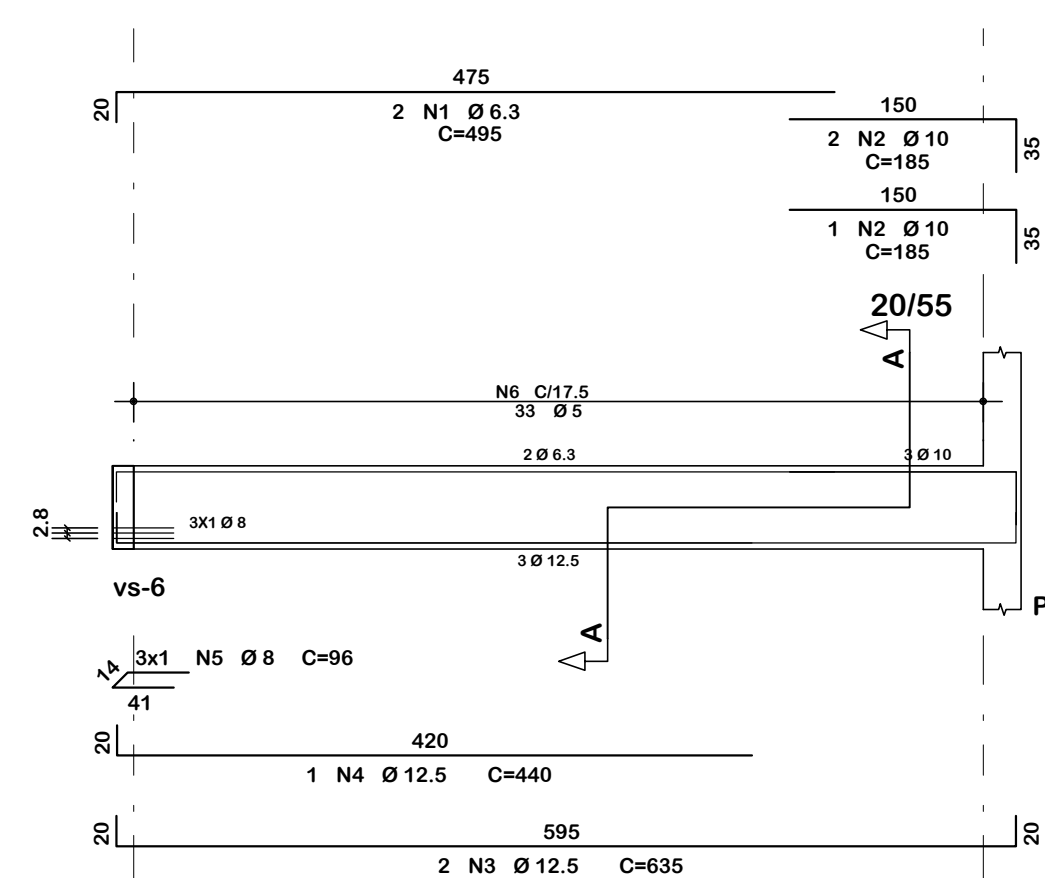
vs-1



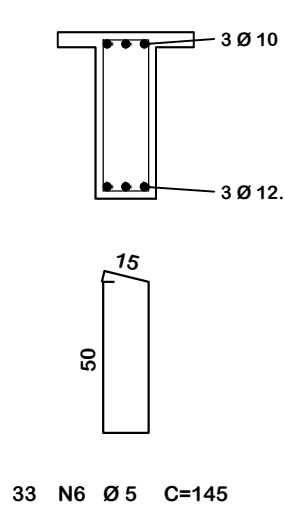
Corte A



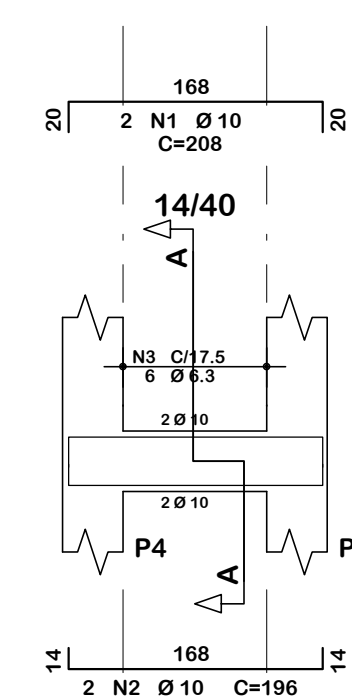
vs-2



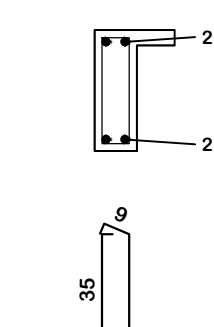
Corte A



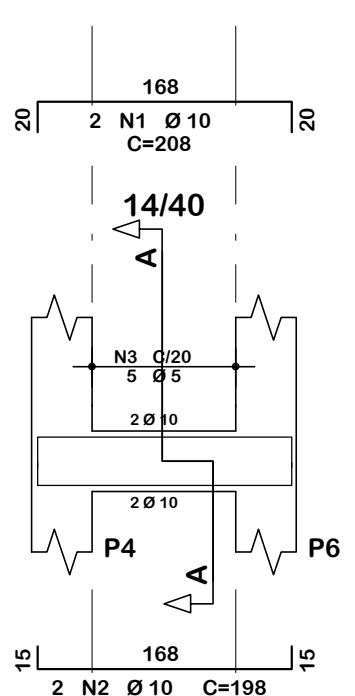
vs-3



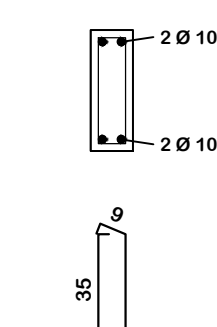
Corte A



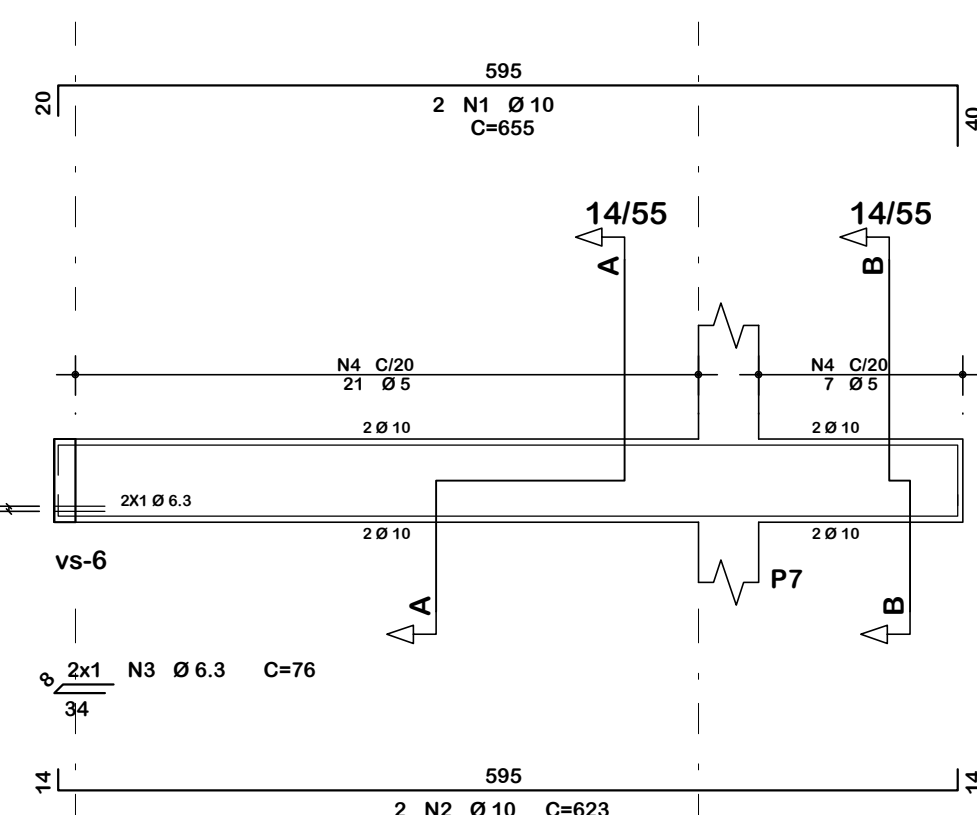
vs-4



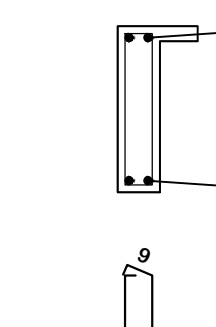
Corte A



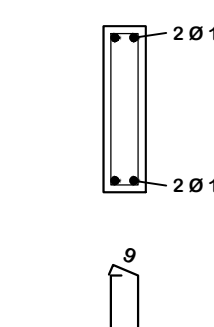
vs-5



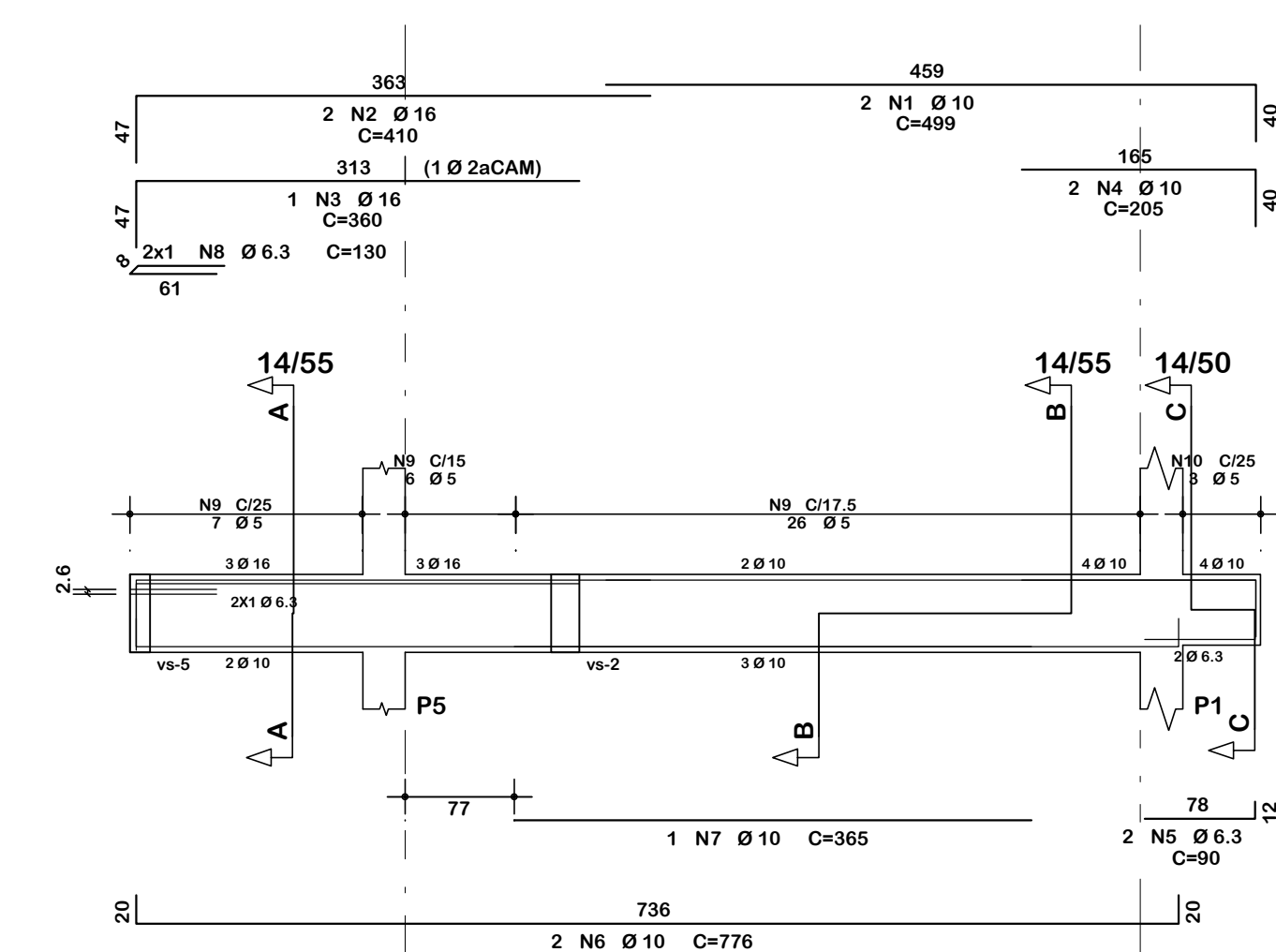
Corte A



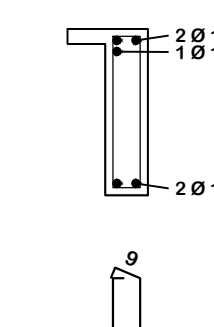
Corte B



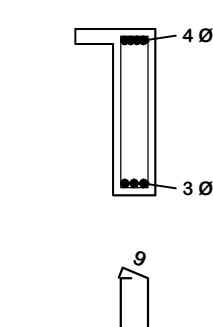
vs-6



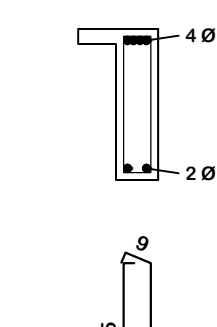
Corte A



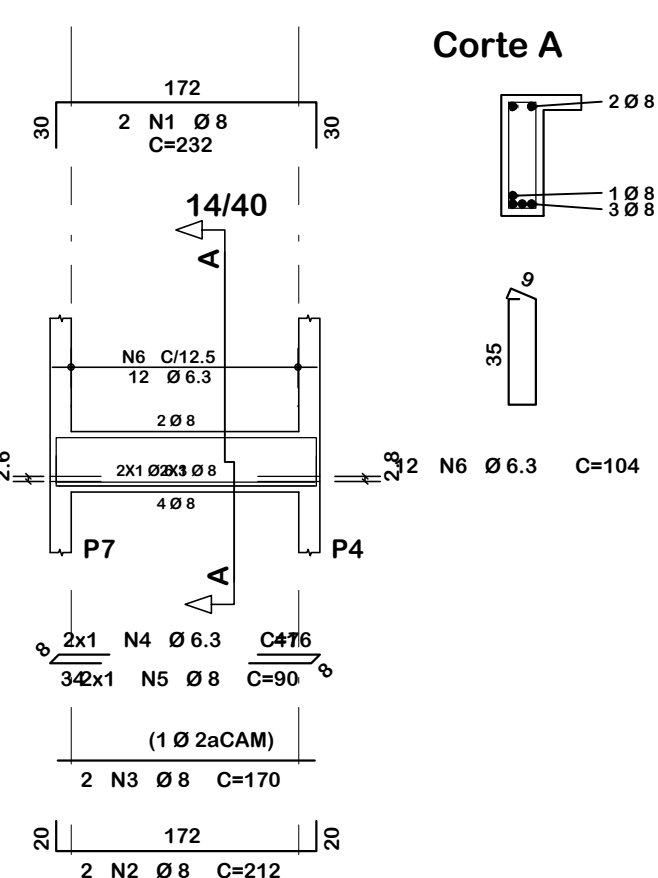
Corte B



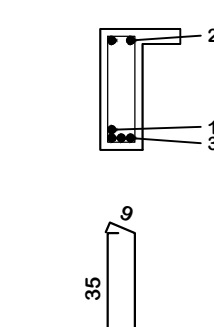
Corte C



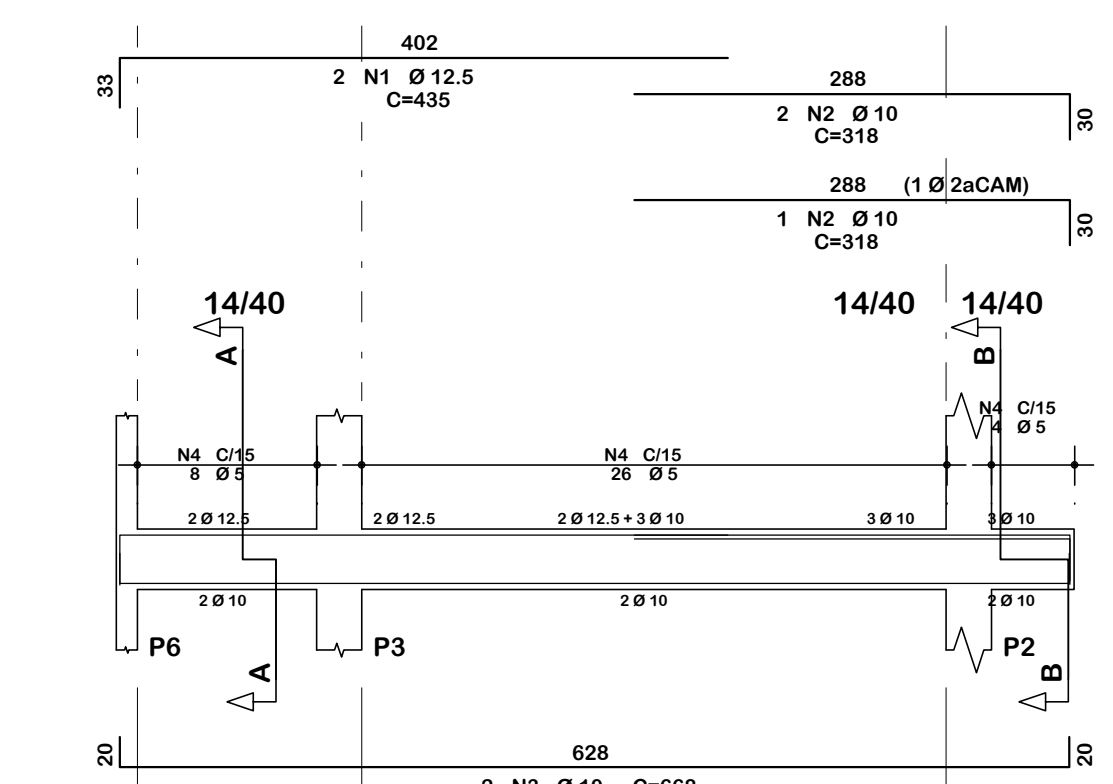
vs-7



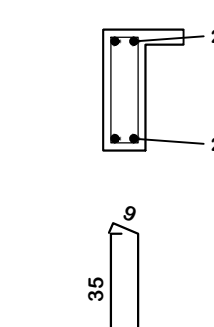
Corte A



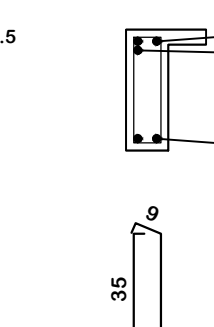
vs-8



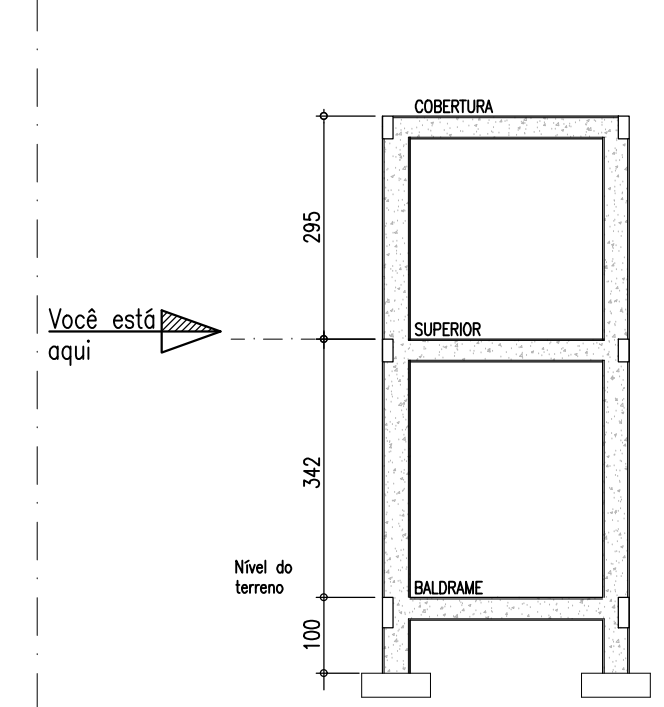
Corte A



Corte B



DETALHE Níveis dos Pavimentos



Resumo de materiais

RESUMO DE AÇO SUPERIOR		
AÇO	BITOLA (mm)	PESO (kg)
60	5	36
50	6,3	9
	8	7
	10	74
	12,5	46
	16	19
Peso Total		191 kg

Convenção dos pilares

- PILAR QUE CONTINUA
- PILAR QUE MORRE

Notas Gerais

- Materiais:
- Aço.....: CA50 e CA60
 - Concreto Estrutura.....: 25 MPa (250 kgf/cm²)
 - Concreto Sapatas.....: 25 MPa (250 kgf/cm²)
 - Deve ser mantido cura úmida do concreto por 7 dias
 - Deve ser mantido o escoramento por no mínimo por 21 dias
 - Só poderão ser executadas paredes após 28 dias da concretagem
 - Deve ser utilizado espaçadores plásticos para garantir o recobrimento dos elementos
 - Todas as cotas em centímetros, exceto cotas de níveis que estão em metros
- Recobrimentos:
- Vigas.....: 2,5cm
 - Pilares.....: 2,5cm
 - Lajes.....: 2,0cm
 - Sapatas.....: 5,0cm



AMERIOS



1926 Palmitos 1954

ASSOCIAÇÃO DOS MUNICÍPIOS DO ENTRE RIOS-SC
 BOM JESUS DO OESTE-CAMPO ERÉ-CUNHA-PORÁ-CUNHATÁI-FLORES DO SERTÃO
 IRACEMINHA-MARAVILHA-MODELO-PALMITOS-RIQUEZA-ROSELÂNIA-SALTINHO
 SANTA TEREZINHA DO PROGRESSO-SÃO MIGUEL DA BOA VISTA-SAUADADES-TIGRINHOS

ENDERÇO:
 Av. Euclides da Cunha, 160 - Cx. P. 47 - Centro
 89.874-000 - MARAVILHA - Santa Catarina
 Fone/Fax: (0**49) 3664-0282- e-mail:amerios@amerios.org.br
 CNPJ 00.961.206/0001-88

MUNICÍPIO DE PALMITOS / SC

OBRA: **PROJETO ESTRUTURAL**
 AMPLIAÇÃO E REFORMA DO CENTRO EDUCACIONAL
 MUNICIPAL RUDOLPHO WALTER SCHREINER
 ESTRUTURA 01

RESPONSÁVEL TÉCNICO: RAFAEL CASSOL BASSO ENGENHEIRO CIVIL CREA / SCS: 112.213-2	ASS. RESP. TÉCNICO:
ESPECIFICAÇÕES: PLANTA DE FORMAS: SUPERIOR; DETALHAMENTO: VIGAS SUPERIORES;	
PROPRIETÁRIO: MUNICÍPIO DE PALMITOS/SC	ASS. DO PREFEITO:
LOCAL: RUA LEOBERTO LEAL, N° 30 - BAIRRO AURORA	DESENHO: DAIR JOCELY ENGE
DESENHO: RAFAEL CASSOL BASSO	N° DESENHO: Engenharia/Projetos 2022/Palmitos
DATA: Fevereiro / 2022	ÁREA: 130,73 m ²
ESCALA: 1:50/1:25	